

GREYLINE LOGGER

Software for Windows™

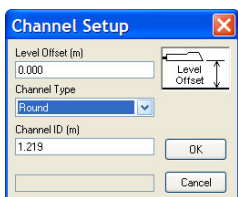
Retrieve, Display, Analyze, & Export.

Features

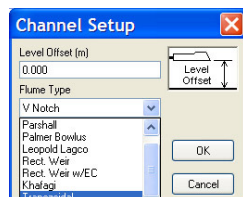
- Retrieve data log files from Pulsar products by direct USB connection, or USB download, depending on instrument model
- One-click export direct to Microsoft Excel or export log files in CSV text format for use in spreadsheet or database programs
- Export graphs in bitmap and vector formats
- Convert measurement units (e.g. gallons, liters, barrels, inches and mm)
- Create formatted reports with daily Minimum, Maximum, Average and Totals
- Create flow reports from level data through flumes and weirs
- Create flow reports from level/velocity data files
- Create flow reports from level data in flumes and weirs
- Create flow reports from velocity log files
- View real-time data from Stingray 2.0 models
- **Free**

Loaded with Tools for Easy Reporting & Analysis

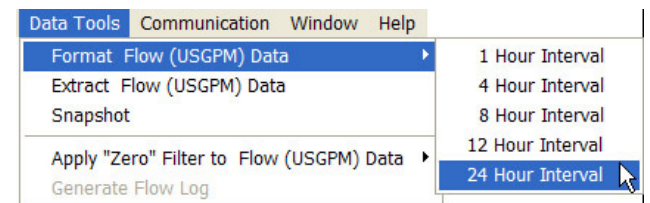
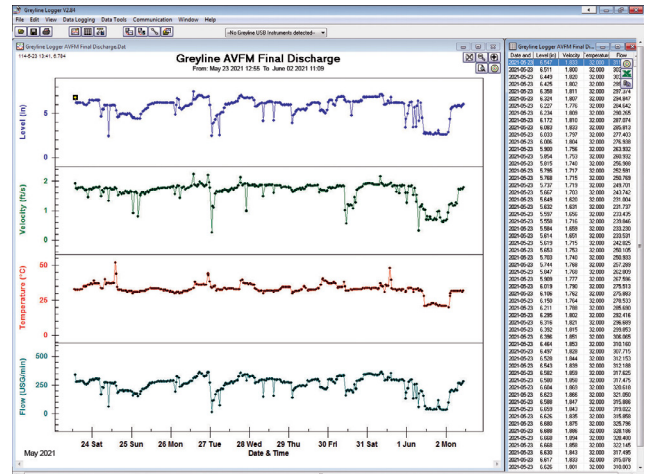
Run the Greyline Logger program to retrieve and display data logs on your computer. Display multiple files or "sessions" on your PC in both graph and table formats.



Calculates Flow from Level-Velocity log files



Generates Flow Reports from Flumes and Weirs



Generates daily Flow Reports with Minimum, Maximum, Average, and Total

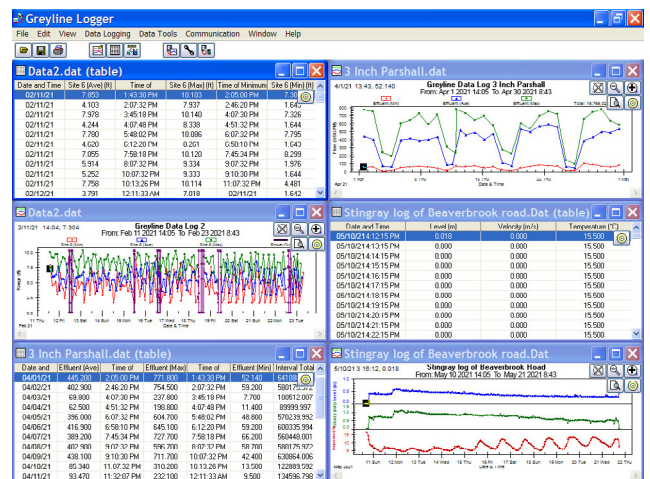


Table & Graph Views

Analyze data on-screen and save as disk files.

Reload log files to compare current and past data, or logs from different sites.